

## 2 Port RS232 PCI Express Serial Card with Power Output

PEX2S952PW



\*actual product may vary from photos

DE: Bedienungsanleitung - [de.startech.com](http://de.startech.com)

FR: Guide de l'utilisateur - [fr.startech.com](http://fr.startech.com)

ES: Guía del usuario - [es.startech.com](http://es.startech.com)

IT: Guida per l'uso - [it.startech.com](http://it.startech.com)

NL: Gebruiksaanwijzing - [nl.startech.com](http://nl.startech.com)

PT: Guia do usuário - [pt.startech.com](http://pt.startech.com)

For the most up-to-date information, please visit: [www.startech.com](http://www.startech.com)

## FCC Compliance Statement

This equipment has been tested and found to comply with the limits for a Class B digital device, pursuant to part 15 of the FCC Rules. These limits are designed to provide reasonable protection against harmful interference in a residential installation. This equipment generates, uses and can radiate radio frequency energy and, if not installed and used in accordance with the instructions, may cause harmful interference to radio communications. However, there is no guarantee that interference will not occur in a particular installation. If this equipment does cause harmful interference to radio or television reception, which can be determined by turning the equipment off and on, the user is encouraged to try to correct the interference by one or more of the following measures:

- Reorient or relocate the receiving antenna.
- Increase the separation between the equipment and receiver.
- Connect the equipment into an outlet on a circuit different from that to which the receiver is connected.
- Consult the dealer or an experienced radio/TV technician for help.

## Use of Trademarks, Registered Trademarks, and other Protected Names and Symbols

This manual may make reference to trademarks, registered trademarks, and other protected names and/or symbols of third-party companies not related in any way to StarTech.com. Where they occur these references are for illustrative purposes only and do not represent an endorsement of a product or service by StarTech.com, or an endorsement of the product(s) to which this manual applies by the third-party company in question. Regardless of any direct acknowledgement elsewhere in the body of this document, StarTech.com hereby acknowledges that all trademarks, registered trademarks, service marks, and other protected names and/or symbols contained in this manual and related documents are the property of their respective holders.

# Table of Contents

<b>Introduction</b> .....	<b>1</b>
Packaging Contents .....	1
System Requirements.....	1
<b>Installation</b> .....	<b>2</b>
Jumper Configuration .....	2
Hardware Installation .....	3
Driver Installation.....	4
Verifying Installation.....	5
<b>Specifications</b> .....	<b>6</b>
<b>Technical Support</b> .....	<b>7</b>
<b>Warranty Information</b> .....	<b>7</b>

# Introduction

The PEX2S952PW 2 Port PCI Express RS232 Serial Adapter Card with Power Output turns a PCI Express slot into 2 RS-232 (DB9) serial connections and the ports provide power output to your devices.

Suitable for many RS232 powered serial applications, and including both low and full profile brackets, the selectable 5V or 12V power option is able to output using pin 1, 4, 8 or 9, allowing you to configure the card to suit the requirements of your powered RS232 devices.

The PCI express serial card is based on a native single chip design, that allows you to harness the full capability of PCI Express (PCIe) - providing optimum reliability and speed while reducing the load applied to the CPU by as much as 48% over conventional (bridge chip) serial cards.

## Packaging Contents

- 1x 2 Port PCI Express Serial Card
- 1x DB9 Breakout Cable
- 1x Low Profile Bracket
- 1x Driver CD
- 1x Instruction Manual

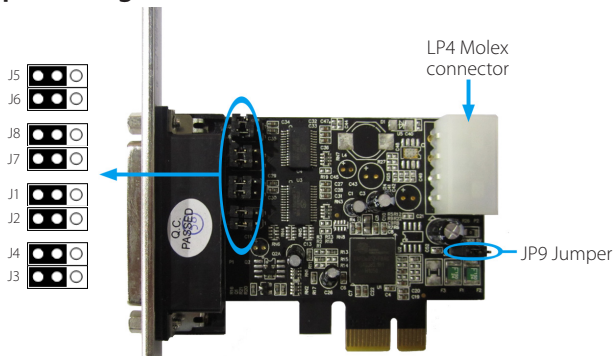
## System Requirements

- PCI Express enabled computer system with available PCI Express slot
- Available LP4 Molex power connector
- Microsoft® Windows® 2000/ XP/ Server 2003/ Vista/ Server 2008 R2/ 7 (32/64-bit), or Windows CE 5.0, or Linux® kernel 2.4.x/2.6.x

# Installation

**WARNING!** PCI Express cards, like all computer equipment, can be severely damaged by static electricity. Be sure that you are properly grounded before opening your computer case or touching your PCI Express card. StarTech.com recommends that you wear an anti-static strap when installing any computer component. If an anti-static strap is unavailable, discharge yourself of any static electricity build-up by touching a large grounded metal surface (such as the computer case) for several seconds. Also be careful to handle the PCI Express card by its edges and not the gold connectors.

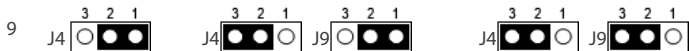
## Jumper Configuration



Each serial port can be configured to output 5V or 12V power on pins 1, 4, 8, 9 depending on the jumper configuration or use the standard RS232 pin signals.

### Serial Port 1

Pin	Normal	5V	12V
1	J1	J1	J9
4	J3	J3	J9
8	J2	J2	J9



## Serial Port 2

Pin	Normal	5V	12V
1	J5	J5	J9
4	J7	J7	J9
8	J6	J6	J9
9	J8	J8	J9

## Hardware Installation

1. Turn your computer off and any peripherals connected to the computer (i.e. Printers, external hard drives, etc.). Unplug the power cable from the rear of the power supply on the back of the computer and disconnect all peripheral devices.
2. Remove the cover from the computer case. See documentation for your computer system for details.
3. Locate an open PCI Express slot and remove the metal cover plate on the rear of the computer case (Refer to documentation for your computer system for details.). Note that this card will work in PCI Express slots of additional lanes (i.e. x4, x8 or x16 slots).
4. Gently insert the card into the open PCI Express slot and fasten the bracket to the rear of the case.

**NOTE:** If installing the card into a small form factor/low profile system, replacing the pre-installed full profile bracket with the included low profile installation bracket may be necessary.

5. Connect an LP4 Molex power connector from the computer power supply, to the power connector on the card.
6. Place the cover back onto the computer case.

7. Connect the DB9 breakout cable to the external 44-pin connector on the card.
8. Insert the power cable into the socket on the power supply and reconnect all other connectors removed in Step 1.

## Driver Installation

### Windows 2000/XP/Server 2003

1. Upon starting Windows, if the "Found New Hardware" wizard appears on the screen, cancel/close the window and insert the included Driver CD into the computer's CD/DVD drive.
2. AutoPlay should automatically launch and display all of the folders on the CD. If not, open "My Computer" and double-click on the CD/DVD drive.
3. Enter the folder "PCIe", then "OXPCIe952" and double-click the file "Setup.exe".
4. This should launch the driver Installation wizard. Continue through the wizard and once complete, all the necessary drivers will be installed.

### Windows Vista/7/Server 2008 R2

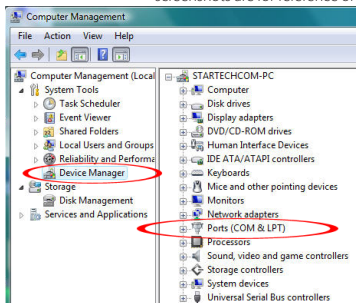
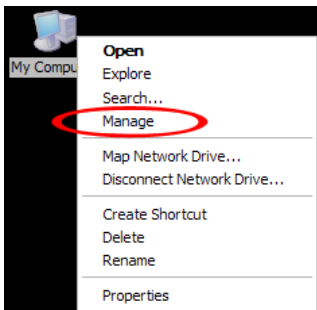
1. Upon starting Windows, if the "Found New Hardware" wizard appears on the screen, cancel/close the window or choose not to install the drivers and insert the included Driver CD into the computer's CD/DVD drive.
2. AutoPlay should automatically launch and display all of the folders on the CD. If not, open "Computer" and double-click on the CD/DVD.
3. Enter the folder "PCIe", then "OXPCIe952" and double-click the file "Setup.exe".
4. This should launch the driver Installation wizard. Continue through the wizard and once complete, all the necessary drivers will be installed.

# Verifying Installation

## Windows 2000/XP/Server 2003/Vista/Server 2008 R2/7

From the main desktop, right-click on “My Computer” (“Computer” in Vista/7), then select Manage. In the new Computer Management window, select Device Manager from the left window panel.

\*screenshots are for reference only



Double-click on the “Ports (COM & LPT)” option. Two additional COM ports should be listed. The serial ports will be assigned a COM port number based upon the available ports in Windows. This can be changed through the Properties window for each port.



# Specifications

<b>Host Interface</b>	PCI Express v1.1 (x1 slot connector)
<b>Form Factor</b>	Standard Profile
<b>Chipset ID</b>	PLX OXPCLe952
<b>Connectors</b>	2 x 9-pin DB9 male 1 x LP4 Molex male
<b>Serial Protocol</b>	RS-232
<b>Output Voltage</b>	5V / 12V
<b>Surge Protection</b>	±15KV ESD on all signal pins
<b>Maximum Data Transfer Rate</b>	460.8 Kbps
<b>Data Bits</b>	4, 5, 6, 7, 8
<b>Parity</b>	None, Odd, Even, Space, Mark
<b>Stop Bits</b>	1, 1.5, 2
<b>Flow Control</b>	None, Xon/Xoff, RTS/CTS
<b>Operating Temperature</b>	0°C ~ 50°C (32°F ~ 122°F)
<b>Storage Temperature</b>	-20°C ~ 60°C (4°F ~ 140°F)
<b>Humidity</b>	5% ~ 85% RH
<b>Dimensions</b>	67.0mm x 20.0mm x 120.0mm
<b>Weight</b>	90g
<b>Compatible Operating Systems</b>	Windows 2000/ XP/ Server 2003/ Vista/ Server 2008 R2/ 7 (32/64-bit), Windows CE 5.0, Linux kernel 2.4.x/2.6.x

# Technical Support

StarTech.com's lifetime technical support is an integral part of our commitment to provide industry-leading solutions. If you ever need help with your product, visit [www.startech.com/support](http://www.startech.com/support) and access our comprehensive selection of online tools, documentation, and downloads.

For the latest drivers/software, please visit [www.startech.com/downloads](http://www.startech.com/downloads)

## Warranty Information

This product is backed by a lifetime warranty.

In addition, StarTech.com warrants its products against defects in materials and workmanship for the periods noted, following the initial date of purchase. During this period, the products may be returned for repair, or replacement with equivalent products at our discretion. The warranty covers parts and labor costs only. StarTech.com does not warrant its products from defects or damages arising from misuse, abuse, alteration, or normal wear and tear.

### Limitation of Liability

In no event shall the liability of StarTech.com Ltd. and StarTech.com USA LLP (or their officers, directors, employees or agents) for any damages (whether direct or indirect, special, punitive, incidental, consequential, or otherwise), loss of profits, loss of business, or any pecuniary loss, arising out of or related to the use of the product exceed the actual price paid for the product. Some states do not allow the exclusion or limitation of incidental or consequential damages. If such laws apply, the limitations or exclusions contained in this statement may not apply to you.

Hard-to-find made easy. At StarTech.com, that isn't a slogan. It's a promise.

StarTech.com is your one-stop source for every connectivity part you need. From the latest technology to legacy products — and all the parts that bridge the old and new — we can help you find the parts that connect your solutions.

We make it easy to locate the parts, and we quickly deliver them wherever they need to go. Just talk to one of our tech advisors or visit our website. You'll be connected to the products you need in no time.

Visit [www.startech.com](http://www.startech.com) for complete information on all StarTech.com products and to access exclusive resources and time-saving tools.

*StarTech.com is an ISO 9001 Registered manufacturer of connectivity and technology parts. StarTech.com was founded in 1985 and has operations in the United States, Canada, the United Kingdom and Taiwan servicing a worldwide market.*