

USB 3.0 to 2.5" SATA HDD Enclosure with Encryption

S2510BU3PWPS



*actual product may vary from photos

DE: Bedienungsanleitung - de.startech.com

FR: Guide de l'utilisateur - fr.startech.com

ES: Guía del usuario - es.startech.com

IT: Guida per l'uso - it.startech.com

NL: Gebruiksaanwijzing - nl.startech.com

PT: Guia do usuário - pt.startech.com

For the most up-to-date information, please visit: www.startech.com

FCC Compliance Statement

This equipment has been tested and found to comply with the limits for a Class B digital device, pursuant to part 15 of the FCC Rules. These limits are designed to provide reasonable protection against harmful interference in a residential installation. This equipment generates, uses and can radiate radio frequency energy and, if not installed and used in accordance with the instructions, may cause harmful interference to radio communications. However, there is no guarantee that interference will not occur in a particular installation. If this equipment does cause harmful interference to radio or television reception, which can be determined by turning the equipment off and on, the user is encouraged to try to correct the interference by one or more of the following measures:

- Reorient or relocate the receiving antenna.
- Increase the separation between the equipment and receiver.
- Connect the equipment into an outlet on a circuit different from that to which the receiver is connected.
- Consult the dealer or an experienced radio/TV technician for help.

Use of Trademarks, Registered Trademarks, and other Protected Names and Symbols

This manual may make reference to trademarks, registered trademarks, and other protected names and/or symbols of third-party companies not related in any way to StarTech.com. Where they occur these references are for illustrative purposes only and do not represent an endorsement of a product or service by StarTech.com, or an endorsement of the product(s) to which this manual applies by the third-party company in question. Regardless of any direct acknowledgement elsewhere in the body of this document, StarTech.com hereby acknowledges that all trademarks, registered trademarks, service marks, and other protected names and/or symbols contained in this manual and related documents are the property of their respective holders.

Table of Contents

Introduction	1
Packaging Contents	1
System Requirements.....	1
Product Diagrams	2
Top View	2
Front View	2
Hardware Installation	3
How to Use	5
Specifications.....	7
Technical Support	8
Warranty Information.....	8

Introduction

Packaging Contents

- 1x USB 3.0 to 2.5" SATA HDD Enclosure w/ Encryption
- 1x Carrying Pouch
- 1x USB 3.0 Cable
- 1x Instruction Manual

System Requirements

- Computer system with available USB 3.0 port (5 Gbit/s) or USB 2.0 port (480Mbps)
- 2.5" SATA hard drive or solid state drive (9.5mm height)
- Microsoft® Windows® 2000/XP/Server 2003/Vista/Server 2008 R2/7/8 (32/64-bit), or Apple® Mac® OS 9.x/10, or Linux®

It is recommended that the enclosure act as a backup to important files, and not as additional storage (unless also regularly backed up), as lost passwords or hardware failure (SATA drive or enclosure) will result in the stored data being unrecoverable.

Product Diagrams

Top View



Front View



Hardware Installation

WARNING! Hard drives and storage enclosures require careful handling, especially when being transported. If you are not careful with your hard disk, lost data may result. Always handle your hard drive and storage device with caution. Be sure that you are properly grounded by wearing an anti-static strap when handling computer components or discharge yourself of any static electricity build-up by touching a large grounded metal surface (such as the computer case) for several seconds.

NOTE: To use encryption, the SATA drive must be initialized and formatted after setup. This will erase all data on the drive.

1. Open the enclosure by locating the thumb ridges. Pressing down slightly, slide the back pane away from the top edge.



2. Connect the the 2.5" SATA Hard Drive



3. Slide the back pane back into place.



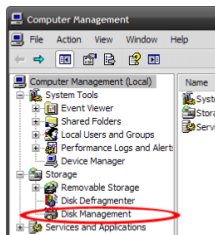
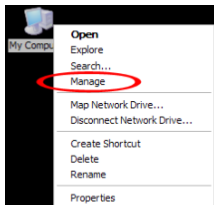
4. With the enclosure fully assembled, connect the USB 3.0 cable from the enclosure to a USB port on the host computer system using the included cable.



How to Use

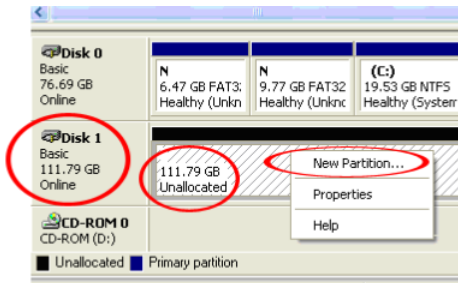
Initial Setup

1. When connected to a host computer for the first time, the “2_Input new password, and then press ‘Enter’” LED will prompt. If no password is used, the enclosure will function as a standard external hard drive enclosure without any encryption.
2. Enter your own Password (1~8 digit PIN setting) and press the ‘Enter’ button.
3. After pressing the ‘Enter’ button, the “3_input password and then press ‘Enter’ button” LED will turn on. Re-enter the same password you entered in the previous step and press the ‘Enter’ button to apply it. (If you enter the incorrect password, you cannot go to the next step. You must go back to the previous step.) Password is now set.
4. Once the password has been setup, the SATA drive must be initialized and formatted before use. From the main Windows desktop, right-click on “My Computer” (“Computer” in Vista/ 7 / 8), then select Manage. In the new Computer Management window, select Disk Management from the left window panel.



5. A dialog window should automatically appear, asking you to initialize the drive. Depending on the version of Windows, it will give you the option of either creating an “MBR” or “GPT” disk. GPT (GUID partition) is not compatible with some older operating systems, while MBR is supported by newer and older operating systems.

6. Once initialized, locate the Disk that says it is “Unallocated” (check the listed hard drive capacity to confirm it’s the correct hard drive) and then right-click in the section that says “Unallocated” and select “New Partition”.



WARNING! Losing the password or hardware failure (the SATA drive or enclosure) will result in the data stored in the enclosure becoming unrecoverable. Removing the drive from the enclosure or placing it into another S2510BU3PWPS enclosure will not allow access to the data. It is recommended that all data stored on the enclosure also be backed up to another location regularly to prevent any chance of losing your data.

Menu Options

Certain key codes will allow access to additional options for the enclosure. The features of these Options are outlined below.

Change Password

Press <Lock> Button → <0> Button → <Enter>

Change the password set in Initial Setup. Once selected follow steps “2 and 3” of initial setup.

HDD Initialization

Press <Lock> Button → <9> Button → <Enter>

Initial the Hard Drive, without using computer disk management software.

NOTE: the drive will still need to be partitioned using disk management software.

HDD Connection / Disconnection (Smart Mount/Un-mount function)

Press <Lock> Button over 2 seconds

Safely un-mounts the hard drive from your computer, to help prevent in data loss and drive damage.

NOTE: Ensure there are no active data transfers prior to performing procedure.

Specifications

Host Interface	USB 3.0
Chipset ID	Fujitsu MB86C311
External Connectors	1 x USB 3.0 female
Encryption Type	AES-256bit
Power Adapter	USB Powered
Enclosure Material	Plastic
Maximum Data Transfer Rate	USB 3.0: 5 Gbit/s
Operating Temperature	0°C ~ 60°C (32°F ~ 140°F)
Storage Temperature	-20°C ~ 60°C (-4°F ~ 76°F)
Humidity	> 70% RH
Dimensions	135mmx78mmx16mm
Weight	75g
Compatible Operating Systems	Windows 2000/XP/Server 2003/Vista/ Server 2008 R2/7/8 (32/64-bit), Mac OS 9/10, Linux

Technical Support

StarTech.com's lifetime technical support is an integral part of our commitment to provide industry-leading solutions. If you ever need help with your product, visit **www.startech.com/support** and access our comprehensive selection of online tools, documentation, and downloads.

For the latest drivers/software, please visit **www.startech.com/downloads**

Warranty Information

This product is backed by a two year warranty.

In addition, StarTech.com warrants its products against defects in materials and workmanship for the periods noted, following the initial date of purchase. During this period, the products may be returned for repair, or replacement with equivalent products at our discretion. The warranty covers parts and labor costs only. StarTech.com does not warrant its products from defects or damages arising from misuse, abuse, alteration, or normal wear and tear.

Limitation of Liability

In no event shall the liability of StarTech.com Ltd. and StarTech.com USA LLP (or their officers, directors, employees or agents) for any damages (whether direct or indirect, special, punitive, incidental, consequential, or otherwise), loss of profits, loss of business, or any pecuniary loss, arising out of or related to the use of the product exceed the actual price paid for the product. Some states do not allow the exclusion or limitation of incidental or consequential damages. If such laws apply, the limitations or exclusions contained in this statement may not apply to you.

Hard-to-find made easy. At StarTech.com, that isn't a slogan. It's a promise.

StarTech.com is your one-stop source for every connectivity part you need. From the latest technology to legacy products — and all the parts that bridge the old and new — we can help you find the parts that connect your solutions.

We make it easy to locate the parts, and we quickly deliver them wherever they need to go. Just talk to one of our tech advisors or visit our website. You'll be connected to the products you need in no time.

Visit www.startech.com for complete information on all StarTech.com products and to access exclusive resources and time-saving tools.

StarTech.com is an ISO 9001 Registered manufacturer of connectivity and technology parts. StarTech.com was founded in 1985 and has operations in the United States, Canada, the United Kingdom and Taiwan servicing a worldwide market.