

Removable 2.5" SATA HDD Backup System

SAT2510U3REM
SAT2510U3S



*actual product may vary from photos

DE: Bedienungsanleitung - de.startech.com

FR: Guide de l'utilisateur - fr.startech.com

ES: Guía del usuario - es.startech.com

IT: Guida per l'uso - it.startech.com

NL: Gebruiksaanwijzing - nl.startech.com

PT: Guia do usuário - pt.startech.com

For the most up-to-date information, please visit: www.startech.com

FCC Compliance Statement

This equipment has been tested and found to comply with the limits for a Class B digital device, pursuant to part 15 of the FCC Rules. These limits are designed to provide reasonable protection against harmful interference in a residential installation. This equipment generates, uses and can radiate radio frequency energy and, if not installed and used in accordance with the instructions, may cause harmful interference to radio communications. However, there is no guarantee that interference will not occur in a particular installation. If this equipment does cause harmful interference to radio or television reception, which can be determined by turning the equipment off and on, the user is encouraged to try to correct the interference by one or more of the following measures:

- Reorient or relocate the receiving antenna.
- Increase the separation between the equipment and receiver.
- Connect the equipment into an outlet on a circuit different from that to which the receiver is connected.
- Consult the dealer or an experienced radio/TV technician for help.

Use of Trademarks, Registered Trademarks, and other Protected Names and Symbols

This manual may make reference to trademarks, registered trademarks, and other protected names and/or symbols of third-party companies not related in any way to StarTech.com. Where they occur these references are for illustrative purposes only and do not represent an endorsement of a product or service by StarTech.com, or an endorsement of the product(s) to which this manual applies by the third-party company in question. Regardless of any direct acknowledgement elsewhere in the body of this document, StarTech.com hereby acknowledges that all trademarks, registered trademarks, service marks, and other protected names and/or symbols contained in this manual and related documents are the property of their respective holders.

Table of Contents

Introduction	1
Packaging Contents	1
System Requirements.....	1
Installation	2
Installing a Hard Drive into SAT2510U3S.....	2
Installing the Drive Bay into the Computer	3
Connecting the Removable Drive Enclosure – Internal	5
Using SAT2510U3S Externally.....	5
Using the Storage Device	5
Specifications	7
Technical Support	8
Warranty Information	8

Introduction

The SAT2510U3REM/SAT2510U3S Removable 2.5" SATA HDD Backup System/Mobile Rack for 3.5"/5.25" Front Bay turns a 2.5" SATA HDD/SSD drive into a removable hard drive that can also be used externally as a normal USB 3.0 enclosure. The 2.5" SATA removable hard drive bay can be mounted into any computer's 3.5" or 5.25" front bay to provide a hot-swap capable mobile rack. Drives can be easily installed and removed from the computer system without having to open the computer case every time. This can be used to create backups that can then be removed for safe keeping/archiving. When outside of the drive bay, the enclosure can be used as a standard external USB 3.0 hard drive with up to 5 Gbps of data transfer bandwidth (10x more than USB 2.0). This makes the removable 2.5" hard drive bay an excellent accessory for people working with very large files and need to take them on the road. Backed by a StarTech.com 2-year warranty and free lifetime technical support.

Packaging Contents

SAT2510U3REM

- 1x 2.5" SATA enclosure
- 1x 3.5" Front Panel Drive Bay
- 1x 3.5" to 5.25" Front Bay Adapter Bracket
- 1x 15-pin SATA power to 4-pin SP4 small floppy power Adapter Cable
- 1x 4-pin LP4 Molex power to 4-pin SP4 small floppy power Adapter Cable
- 1x SATA Cable
- 1x USB 3.0 A to Micro-B Cable
- 1x Screw Kit
- 1x Instruction Manual

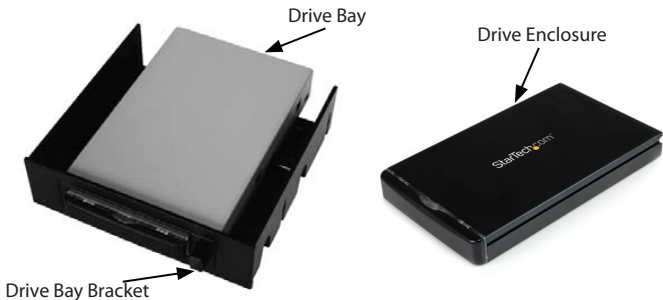
SAT2510U3S

- 1x 2.5" SATA Enclosure for SAT2510U3REM
- 1x USB 3.0 A to Micro-B Cable
- 1x Screw Kit

System Requirements

- Computer chassis with available 5.25" or 3.5" front bay
- Available internal SATA port on motherboard or SATA controller card
- Available SP4 Floppy or LP4 Molex or SATA power connector from power supply
- External Use: Available USB port (USB 3.0 recommended)

Installation



WARNING: Hard drives require careful handling, especially when being transported. If you are not careful with your hard disk, lost data may result. Always handle your hard drive and storage device with caution.

WARNING: Hard drives, like all computer equipment can also be severely damaged by static electricity. Be sure that you are properly grounded before opening your computer case or touching any components. StarTech.com recommends that you wear an anti-static strap when installing any computer equipment. If an antistatic strap is unavailable, discharge yourself of any static electricity build-up by touching a large grounded metal surface (such as the computer case) for several seconds.

WARNING: Do not disconnect any cables or power sources while the hard drive is active. This can result in data loss and possible damage to the hard drive.

Installing a Hard Drive into SAT2510U3S

Remove the two screws from the rear panel of the Drive Enclosure and remove the rear panel cover.

1. Pull out the circuit board from the drive enclosure housing.

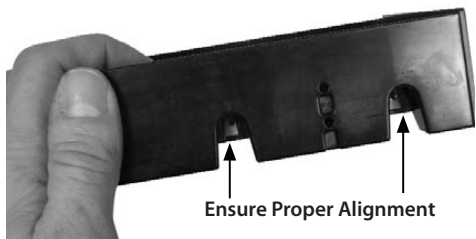
2. Attach the 2.5" SATA hard drive to the circuit board, and fasten it to the board from the bottom using the provided mounting screws.



3. Once the hard drive has been secured to the circuit board, carefully slide the circuit board (with hard drive attached) into the drive enclosure housing.
4. Replace the rear panel cover and fasten the rear panel to the enclosure, using the screws that were removed in step #1.

Installing the Drive Bay into the Computer

1. If mounting the Drive Bay into a 3.5" bay, please skip to Step 3. Insert the Drive Bay into the 5.25" bracket provided, ensuring that the holes located on the sides of the drive bay are aligned with the holes in the sides of the bracket.



2. Fasten the Drive Bay to the Bracket, using the screws provided. To ensure proper attachment to the Bracket, secure the Drive Bay to the Bracket both on the sides and on the bottom of the Bracket.
3. Turn your computer off and any peripherals connected to the computer (i.e. Printers, external hard drives, etc.). Unplug the power cable from the rear of the power supply on the back of the computer and disconnect all peripheral devices.

4. Remove the side cover(s) from the computer case and the cover to the front bay you wish to mount the Drive Bay into (see documentation for your computer system for details).
5. Insert the Drive Bay into the front bay slot as appropriate (see documentation for your computer system for details). Please ensure proper alignment of mounting holes in the Drive Bay/Bracket with the mounting holes for the computer chassis.
6. If necessary, secure the Drive Bay to the drive bay slot, using the screws provided, otherwise secure the Drive Bay to the computer chassis using the method appropriate for your particular chassis.
7. Connect an available 4-pin SP4 small floppy power connector to the rear panel of the Drive Bay. If an SP4 is not available, use the included adapters to connect either an LP4 Molex or SATA power connector to the rear panel of the Drive Bay.
8. Connect a 7-pin SATA data cable (provided) from the SATA port located on the rear panel of the Drive Bay to a SATA port provided by the computer motherboard or SATA controller card.
9. Replace the side panel(s) of the computer casing and insert the power cable into the socket on the power supply and reconnect all other connectors removed in Step 3.

Connecting the Removable Drive Enclosure – Internal

1. Power down the host computer.
2. Insert the Drive Enclosure into the Drive Bay. The Eject button will pop out, indicating that the Drive Enclosure is fully inserted.
3. Power up to the computer. Once the operating system is fully loaded it should detect the presence of the SATA drive.
4. The SATA drive is now ready for use and will be available in My Computer (if already formatted), or through the Disk Management utility (see “Using the Storage Device” for more details).

NOTE: Inserting or removing the Drive Enclosure while the computer is running will be dependent on the capabilities of the SATA controller the Drive Bay is connected to. The SATA controller must support hot-swapping, otherwise the computer will need to be powered off before inserting/removing the drive enclosure. Improper usage may result in data loss or damage to the drive.

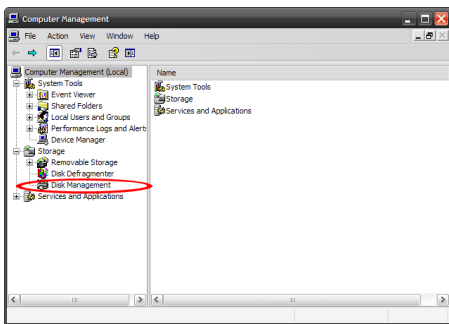
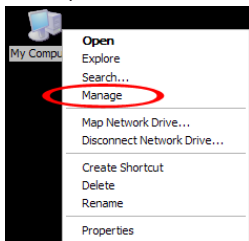
Using SAT2510U3S Externally

Use the provided USB A to B cable to connect the SAT2510U3S to a USB 3.0 host port.

Using the Storage Device

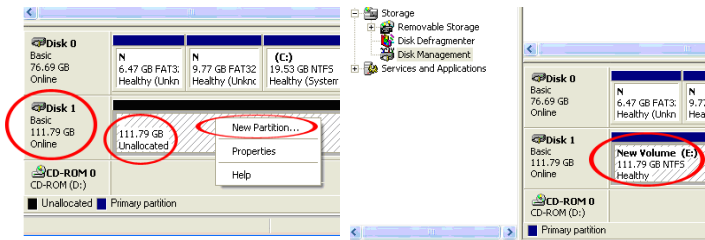
Windows XP/Vista/7/8

If you are using brand new hard drives that do not contain any data, then you will first need to prepare the hard drive for use before you can write data to it. From the main desktop, right-click on “My Computer” (“Computer” in Vista/7), then select Manage. In the new Computer Management window, select Disk Management from the left window panel.



Locate the Disk that says it is “Unallocated” (check hard drive capacity to confirm it’s the correct hard drive) and then right-click in the section that says “Unallocated” and select “New Partition”.

The New Partition Wizard will appear. Follow the instructions in the wizard to complete setting up the drive. Once complete, the Disk should show up as “Healthy” with a drive letter assigned (i.e. E:). This drive letter should now appear within My Computer.



If you are installing a hard drive that already has data on it, then after plugging it in, the drive should automatically show up with a drive letter assigned within My Computer.

Specifications

Number of Hard Drives Supported	1 x 2.5"
Host Interface	SATA revision 3.x SuperSpeed USB 3.0
Chipset ID	ASMedia ASM1053 ASMedia ASM1456
External Connectors	Drive Bay: 1 x 7-pin SATA port 1 x 4-pin SP4 small Floppy male Enclosure: 1 x USB 3.0 micro-B female 1 x 7+15 pin SATA data+power port
LEDs	1 x Power/Activity
Compatible Hard Drives	2.5" SATA drives, up to 9.5mm in height
Maximum Data Bandwidth	SATA III: 6 Gbps USB 3.0: 5 Gbps
Enclosure Material	Aluminum and Plastic (UL 94V-0)
Operating Temperature	0°C ~ 40°C (32°F ~ 104°F)
Storage Temperature	-20°C ~ 70°C (-4°F ~ 158°F)
Humidity	5% ~ 95% RH
Dimensions	5.25" Bay: 164.85mm x 145.8mm x 42.0mm 3.5" Bay: 155.0mm x 103.0mm x 26.0mm 2.5" Enclosure: 133.0mm x 80.0mm x 17.0mm
Weight	Total: 410g
Compatible Operating Systems	Windows XP/ Server 2003/ Server 2008 R2/ Vista/ 7/ 8 (32/64-bit), Mac OS 10.8, Linux

Technical Support

StarTech.com's lifetime technical support is an integral part of our commitment to provide industry-leading solutions. If you ever need help with your product, visit www.startech.com/support and access our comprehensive selection of online tools, documentation, and downloads.

For the latest drivers/software, please visit www.startech.com/downloads

Warranty Information

This product is backed by a two year warranty.

In addition, StarTech.com warrants its products against defects in materials and workmanship for the periods noted, following the initial date of purchase. During this period, the products may be returned for repair, or replacement with equivalent products at our discretion. The warranty covers parts and labor costs only. StarTech.com does not warrant its products from defects or damages arising from misuse, abuse, alteration, or normal wear and tear.

Limitation of Liability

In no event shall the liability of StarTech.com Ltd. and StarTech.com USA LLP (or their officers, directors, employees or agents) for any damages (whether direct or indirect, special, punitive, incidental, consequential, or otherwise), loss of profits, loss of business, or any pecuniary loss, arising out of or related to the use of the product exceed the actual price paid for the product. Some states do not allow the exclusion or limitation of incidental or consequential damages. If such laws apply, the limitations or exclusions contained in this statement may not apply to you.

Hard-to-find made easy. At StarTech.com, that isn't a slogan. It's a promise.

StarTech.com is your one-stop source for every connectivity part you need. From the latest technology to legacy products — and all the parts that bridge the old and new — we can help you find the parts that connect your solutions.

We make it easy to locate the parts, and we quickly deliver them wherever they need to go. Just talk to one of our tech advisors or visit our website. You'll be connected to the products you need in no time.

Visit www.startech.com for complete information on all StarTech.com products and to access exclusive resources and time-saving tools.

StarTech.com is an ISO 9001 Registered manufacturer of connectivity and technology parts. StarTech.com was founded in 1985 and has operations in the United States, Canada, the United Kingdom and Taiwan servicing a worldwide market.