

## 3.5in SuperSpeed USB 3.0 SATA Hard Drive Enclosure

SAT3510U3V

SAT3510U3VGB



\*actual product may vary from photos

DE: Bedienungsanleitung - [de.startech.com](http://de.startech.com)

FR: Guide de l'utilisateur - [fr.startech.com](http://fr.startech.com)

ES: Guía del usuario - [es.startech.com](http://es.startech.com)

IT: Guida per l'uso - [it.startech.com](http://it.startech.com)

NL: Gebruiksaanwijzing - [nl.startech.com](http://nl.startech.com)

PT: Guia do usuário - [pt.startech.com](http://pt.startech.com)

For the most up-to-date information, please visit: [www.startech.com](http://www.startech.com)

## FCC Compliance Statement

This equipment has been tested and found to comply with the limits for a Class B digital device, pursuant to part 15 of the FCC Rules. These limits are designed to provide reasonable protection against harmful interference in a residential installation. This equipment generates, uses and can radiate radio frequency energy and, if not installed and used in accordance with the instructions, may cause harmful interference to radio communications. However, there is no guarantee that interference will not occur in a particular installation. If this equipment does cause harmful interference to radio or television reception, which can be determined by turning the equipment off and on, the user is encouraged to try to correct the interference by one or more of the following measures:

- Reorient or relocate the receiving antenna.
- Increase the separation between the equipment and receiver.
- Connect the equipment into an outlet on a circuit different from that to which the receiver is connected.
- Consult the dealer or an experienced radio/TV technician for help.

## Use of Trademarks, Registered Trademarks, and other Protected Names and Symbols

This manual may make reference to trademarks, registered trademarks, and other protected names and/or symbols of third-party companies not related in any way to StarTech.com. Where they occur these references are for illustrative purposes only and do not represent an endorsement of a product or service by StarTech.com, or an endorsement of the product(s) to which this manual applies by the third-party company in question. Regardless of any direct acknowledgement elsewhere in the body of this document, StarTech.com hereby acknowledges that all trademarks, registered trademarks, service marks, and other protected names and/or symbols contained in this manual and related documents are the property of their respective holders.

# Table of Contents

<b>Introduction</b> .....	<b>1</b>
Packaging Contents .....	1
System Requirements.....	1
<b>Installation</b> .....	<b>2</b>
Hardware Installation .....	2
Driver Installation.....	4
<b>Using the Enclosure</b> .....	<b>5</b>
<b>Specifications</b> .....	<b>7</b>
<b>Technical Support</b> .....	<b>8</b>
<b>Warranty Information</b> .....	<b>8</b>

# Introduction

The StarTech.com USB 3.0 to SATA external hard drive enclosure allows almost any standard 3.5-inch internal SATA Hard Disk Drive (HDD) to be made into a cost-effective external SuperSpeed USB 3.0 hard drive. With data transfer rates up to 5 Gbps (10 times faster than USB 2.0), speed is no longer compromised for convenience, ease of use or portability. The USB 3.0 HDD Enclosure is backward compatible with USB 2.0, making it more than suitable for use with computers that don't yet have USB 3.0 ports.

## Packaging Contents

- External Hard Drive Enclosure
- USB 3.0 cable
- Screw kit
- Power Adapter
- Enclosure Stand
- Instruction Manual

## System Requirements

- USB enabled computer system with available USB port
- Available power outlet
- 3.5" SATA hard drive (SATA revision 1/2/3 compatible)
- Microsoft® Windows® XP/Server 2003/Vista/Server 2008 R2/7/8 (32/64-bit)

# Installation

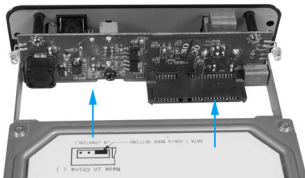
**WARNING!** Hard drives require careful handling, especially when being transported. If you are not careful with your hard disk, lost data may result. Always handle your hard drive and storage device with caution.

## Hardware Installation

1. Gently pull the rear panel away from the enclosure casing, to expose the internal SATA connections:

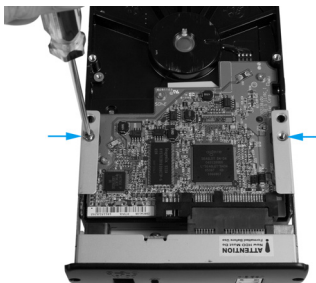


2. Align the SATA connector on the hard drive with the connectors on the rear panel and connect them together. Ensure the SATA drive is sitting squarely between the rails:

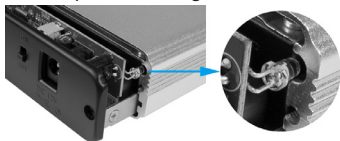


3. With the hard drive connected to the rear panel, turn the drive over to expose its base. Fasten the hard drive to the rails on both sides, using the screws provided:

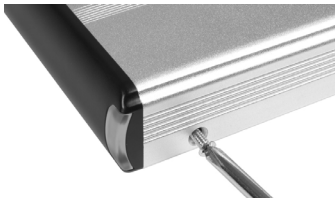




4. Carefully slide the rear panel assembly (with drive attached) into the body of the Enclosure; be cautious that the rear panel assembly is properly aligned with the body of the Enclosure to prevent damage to the LEDs.



5. At the front end of the enclosure, fasten both sides of the case to lock the hard drive in place:



6. Fasten the rear panel to the enclosure casing on both sides using the screws (2) provided.



7. Once the drive has been secured within the Enclosure, connect the DC power adapter to the DC power port. Connect the remaining end of the power adapter to an available electrical outlet.
8. Connect the USB cable to the USB host port on the rear panel of the Enclosure then connect the remaining end of the cable to the host computer.

**NOTE:** If no host connection is detected (USB cable unplugged or computer turned off), the enclosure will automatically go into Suspend Mode and power down the SATA drive until an active host connection is detected.

9. With the host computer powered on, power on the Drive Enclosure using the On/Off switch. The operating system will automatically detect and install the SATA drive. Once complete, the drive should be ready for use.

**NOTE:** The enclosure will automatically go into Suspend Mode if the connection is left idle for more than 5 minutes. The SATA drive will be powered down but still visible to the operating system. Accessing the SATA drive will automatically cancel Suspend Mode and power the drive back up.

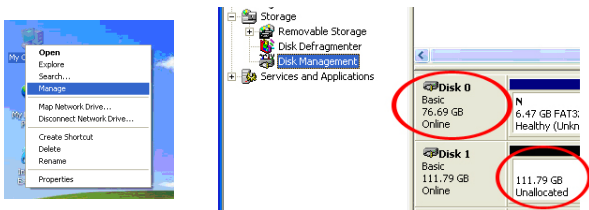
## Driver Installation

No driver installation is required for the compatible operating systems, as this enclosure is natively supported, so the drivers are already installed.

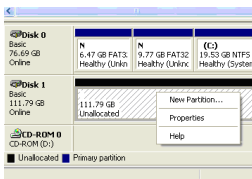
# Using the Enclosure

## Windows 2000/XP/Vista/7/8

If you are using a brand new hard drive that does not contain any data, then you will first need to prepare the hard drive for use. From the main desktop, right-click on "My Computer" ("Computer" in Vista/7), then select Manage. In the new Computer Management window, select Disk Management from the left window panel.

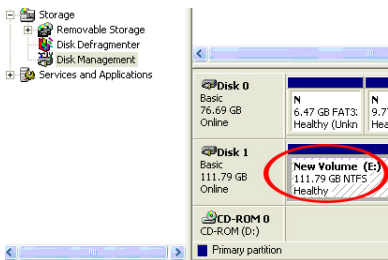


Locate the Disk that says it is "Unallocated" (check hard drive capacity to confirm it's the correct hard drive) and then right-click in the section that says "Unallocated" and select "New Partition".





The New Partition Wizard will appear. Follow the instructions in the wizard to complete setting up the drive. Once complete, the Disk should show up as “Healthy” with a drive letter assigned (i.e. E:). This drive letter should now appear within My Computer.



If you are installing a hard drive that already has data on it, then after plugging it in, the drive should automatically show up with a drive letter assigned within My Computer.

# Specifications

<b>Bus Interface</b>	USB 3.0
<b>Chipset ID</b>	JMicron JMS539
<b>External Connectors</b>	1 x USB 3.0 type B female 1 x DC Power
<b>LEDs</b>	1 x Power/Activity
<b>Maximum Data Transfer Rate</b>	<b>USB 3.0:</b> 5 Gbps
<b>Compatible Hard Drives</b>	3.5" SATA 1.5/3.0/6.0 Gbps compatible hard drives
<b>Power Adapter</b>	12VDC, 2000mA, center positive, type M plug
<b>Operating Temperature</b>	0°C ~ 60°C (32°F ~ 140°F)
<b>Storage Temperature</b>	-20°C ~ 80°C (-4°F ~ 176°F)
<b>Humidity</b>	5 ~ 90% RH
<b>Dimensions</b>	186.0mm x 104.0mm x 31.5mm
<b>Weight</b>	570 g
<b>Compatible Operating Systems</b>	Windows XP/Server 2003/Vista/Server 2008 R2/7/8 (32/64-bit)

# Technical Support

StarTech.com's lifetime technical support is an integral part of our commitment to provide industry-leading solutions. If you ever need help with your product, visit [www.startech.com/support](http://www.startech.com/support) and access our comprehensive selection of online tools, documentation, and downloads.

For the latest drivers/software, please visit [www.startech.com/downloads](http://www.startech.com/downloads)

## Warranty Information

This product is backed by a two year warranty.

In addition, StarTech.com warrants its products against defects in materials and workmanship for the periods noted, following the initial date of purchase. During this period, the products may be returned for repair, or replacement with equivalent products at our discretion. The warranty covers parts and labor costs only. StarTech.com does not warrant its products from defects or damages arising from misuse, abuse, alteration, or normal wear and tear.

### Limitation of Liability

In no event shall the liability of StarTech.com Ltd. and StarTech.com USA LLP (or their officers, directors, employees or agents) for any damages (whether direct or indirect, special, punitive, incidental, consequential, or otherwise), loss of profits, loss of business, or any pecuniary loss, arising out of or related to the use of the product exceed the actual price paid for the product. Some states do not allow the exclusion or limitation of incidental or consequential damages. If such laws apply, the limitations or exclusions contained in this statement may not apply to you.

Hard-to-find made easy. At StarTech.com, that isn't a slogan. It's a promise.

StarTech.com is your one-stop source for every connectivity part you need. From the latest technology to legacy products — and all the parts that bridge the old and new — we can help you find the parts that connect your solutions.

We make it easy to locate the parts, and we quickly deliver them wherever they need to go. Just talk to one of our tech advisors or visit our website. You'll be connected to the products you need in no time.

Visit [www.startech.com](http://www.startech.com) for complete information on all StarTech.com products and to access exclusive resources and time-saving tools.

*StarTech.com is an ISO 9001 Registered manufacturer of connectivity and technology parts. StarTech.com was founded in 1985 and has operations in the United States, Canada, the United Kingdom and Taiwan servicing a worldwide market.*