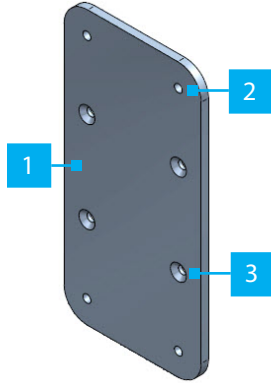


Mount for StarTech.com Docking Stations and Hubs

Product Diagram (SSPMSUDWM)



Component	Function
1 Docking Station Mount	• Used to mount a StarTech.com Docking Station or Hub to a desk or wall.
2 Mounting Holes	• Used to mount the Docking Station Mount to a desk or wall.
3 Docking Station Mounting Holes	• Used to mount a StarTech.com Docking Station or Hub to the Docking Station Mount .

Requirements

For the latest requirements, please visit www.startech.com/SSPMSUDWM

- Robertson Head Screwdriver x 1

Package Contents

- Docking Station Mount x 1
- M3 x 5 mm Screws x 4
- #5-20 x 5/8" Wood Screws x 4
- Quick-Start Guide x 1

Attaching a StarTech.com Docking Station or Hub

1. Align the **Mounting Holes** on the **Adapter** with the **Mounting Holes** on the **StarTech.com Docking Station** or **Hub**. The recessed hole pattern should be facing outward so the **M3 x 5 mm (Countersunk) Screws** will fit properly.
2. Insert the four **M3 x 5 mm Screws** through the **Mounting Holes** on the **Adapter** and into the **Mounting Holes** on the **StarTech.com Docking Station** or **Hub**.
3. Using a **Phillips Head Screwdriver** (sold separately) tighten the **M3 x 5 mm Screws**, being careful not to over-tighten the **M3 x 5 mm Screws**.

Mounting the Docking Station Mount on a Desk

Note: Make sure that the thickness of the Desk is greater than 12.5 mm (.5") to ensure that the screws do not penetrate the opposite side of the desk.

1. Align the **Docking Station Mount** on the desk.
2. Insert the **#5-20 x 5/8" Wood Screws** in the **Mounting Holes** on the **Docking Station Mount**.
3. Using a **Robertson Head Screwdriver** (sold separately), tighten the **#5-20 x 5/8" Wood Screws**.

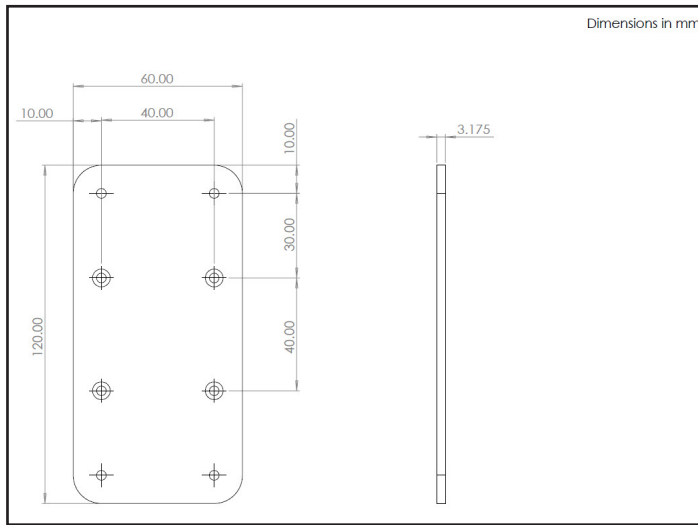
Mounting the Docking Station Mount on a Wall

Notes: It is recommended to use wall studs when mounting the **Docking Station Mount** onto a Wall.

You may need to drill pilot holes when mounting the **Docking Station Mount** into a wall stud.

1. Align the **Docking Station Mount** on the **Wall**.
2. Insert the **#5-20 x 5/8" Wood Screws** in the **Mounting Holes** on the **Docking Station Mount**.
3. Using a **Robertson Head Screwdriver**, tighten the **#5-20 x 5/8" Wood Screws**.

Product Dimensions



Use of Trademarks, Registered Trademarks, and other Protected Names and Symbols

This manual may make reference to trademarks, registered trademarks, and other protected names and/or symbols of third-party companies not related in any way to StarTech.com. Where they occur these references are for illustrative purposes only and do not represent an endorsement of a product or service by StarTech.com, or an endorsement of the product(s) to which this manual applies by the third-party company in question. StarTech.com hereby acknowledges that all trademarks, registered trademarks, service marks, and other protected names and/or symbols contained in this manual and related documents are the property of their respective holders.

Warranty Information

This product is backed by a five-year warranty.

For further information on product warranty terms and conditions, please refer to www.startech.com/warranty.

Limitation of Liability

In no event shall the liability of StarTech.com Ltd. and StarTech.com USA LLP (or their officers, directors, employees or agents) for any damages (whether direct or indirect, special, punitive, incidental, consequential, or otherwise), loss of profits, loss of business, or any pecuniary loss, arising out of or related to the use of the product exceed the actual price paid for the product. Some states do not allow the exclusion or limitation of incidental or consequential damages. If such laws apply, the limitations or exclusions contained in this statement may not apply to you.

StarTech.com Ltd.	StarTech.com LLP	StarTech.com Ltd.	FR: startech.com/fr
45 Artisans Cres	2500 Creekside	Unit B, Pinnacle 15	DE: startech.com/de
London, Ontario	Parkwy	Gowerton Rd,	ES: startech.com/es
N5V 5E9	Lockbourne, Ohio	Brackmills	NL: startech.com/nl
Canada	43137	Northampton	IT: startech.com/it
	U.S.A.	NN4 7BW	JP: startech.com/jp
		United Kingdom	