

1-Port PCI Express Gigabit Ethernet Network Card



Actual product may vary from photos

User Manual

SKU#: ST1000SPEX2 / ST1000SPEX2L

Compliance Statements

FCC Compliance Statement

This equipment has been tested and found to comply with the limits for a Class B digital device, pursuant to part 15 of the FCC Rules. These limits are designed to provide reasonable protection against harmful interference in a residential installation. This equipment generates, uses and can radiate radio frequency energy and, if not installed and used in accordance with the instructions, may cause harmful interference to radio communications. However, there is no guarantee that interference will not occur in a particular installation. If this equipment does cause harmful interference to radio or television reception, which can be determined by turning the equipment off and on, the user is encouraged to try to correct the interference by one or more of the following measures:

- Reorient or relocate the receiving antenna
- Increase the separation between the equipment and receiver
- Connect the equipment into an outlet on a circuit different from that to which the receiver is connected
- Consult the dealer or an experienced radio/TV technician for help

For the State of California

WARNING: Cancer and Reproductive Harm

www.P65Warnings.ca.gov

Use of Trademarks, Registered Trademarks, and other Protected Names and Symbols

This manual may make reference to trademarks, registered trademarks, and other protected names and/or symbols of third-party companies not related in any way to StarTech.com. Where they occur these references are for illustrative purposes only and do not represent an endorsement of a product or service by StarTech.com, or an endorsement of the product(s) to which this manual applies by the third-party company in question. Regardless of any direct acknowledgement elsewhere in the body of this document, StarTech.com hereby acknowledges that all trademarks, registered trademarks, service marks, and other protected names and/or symbols contained in this manual and related documents are the property of their respective holders.

Safety Statements

Safety Measures

- Wiring terminations should not be made with the product and/or electric lines under power.
- Product installation and/or mounting should be completed by a certified professional as per the local safety and building code guidelines.
- Cables (including power and charging cables) should be placed and routed to avoid creating electric, tripping or safety hazards.

Mesures de sécurité

- Les terminaisons de câblage ne doivent pas être effectuées lorsque le produit et/ou les câbles électriques sont sous tension.
- L'installation et/ou le montage du produit doit être réalisé par un professionnel certifié et dans le respect des normes locales et du code de construction local.
- Les câbles (y compris les câbles d'alimentation et de chargement) doivent être placés et acheminés de façon à éviter tout risque électrique, de chute ou de sécurité

安全対策

- 電源が入っている状態の製品または電線の終端処理を行わないでください。
- 製品の設置やマウントは、使用地域の安全ガイドラインおよび建築基準に従い、有資格の専門業者が行うようにしてください。
- ケーブル(電源ケーブルと充電ケーブルを含む)は、適切な配置と引き回しを行い、電気障害やつまづきの危険性など、安全上のリスクを回避するようにしてください。

Misure di sicurezza

- I terminali dei fili elettrici non devono essere realizzate con il prodotto e/o le linee elettriche sotto tensione.
- L'installazione e/o il montaggio dei prodotti devono essere eseguiti da un tecnico professionale certificato che conosca le linee guida locali sulle norme edilizie e sulla sicurezza.
- I cavi (inclusi i cavi di alimentazione e di ricarica) devono essere posizionati e stesi in modo da evitare pericoli di inciampo, rischi di scosse elettriche o pericoli per la sicurezza.

Säkerhetsåtgärder

- Montering av kabelavslutningar får inte göras när produkten och/eller elledningarna är strömförda.
- Installation och/eller montering får endast göras av behöriga yrkespersoner och enligt gällande lokala förordningar för säkerhet och byggnormer.
- Kablar (inklusive elkablar och laddningskablar) ska dras och placeras på så sätt att risk för snubblingsolyckor och andra olyckor kan undvikas.

Warning Statements

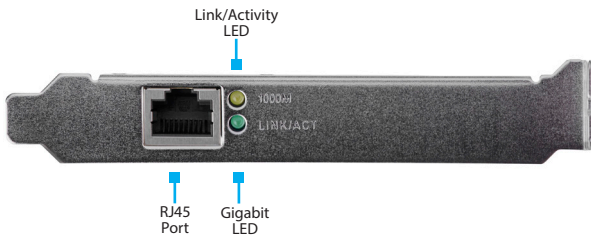
Make sure to assemble this product according to the instructions. Failure to do so might result in personal injury or property damage.

Never use this product if parts are missing or damaged.

Table of Contents

| | |
|------------------------------------|----|
| Compliance Statements | 1 |
| Safety Statements | 2 |
| Warning Statements | 3 |
| Product Diagram | 5 |
| Product Information | 6 |
| Package Contents | 6 |
| System Requirements..... | 6 |
| Installation | 7 |
| Hardware Installation | 7 |
| Driver Installation | 8 |
| Verify Installation..... | 9 |
| LED Indicators | 11 |
| Specifications | 12 |

Product Diagram



Product Information

Package Contents

ST1000SPEX2

- Gigabit Ethernet PCI Express Card x 1
- 1x Low Profile Bracket x 1
- 1x User Manual x 1

ST1000SPEX2L

- Gigabit Ethernet PCI Express Card x 1
- Standard Profile Bracket x 1
- User Manual x 1

System Requirements

- PCI Express enabled computer system with available PCI Express slot
- Microsoft® Windows® XP/ Server 2003/ Server 2008 R2/ Vista/ 7/ 8 (32/64-bit), or Apple® Mac OS® 10.4 ~ 10.8, or Linux® kernel 2.4.x and later

Installation

Warning! *PCI Express cards, like all computer equipment, can be severely damaged by static electricity. Be sure that you are properly grounded before opening your computer case or touching your PCI Express card. StarTech.com recommends that you wear an anti-static strap when installing any computer component. If an anti-static strap is unavailable, discharge yourself of any static electricity build-up by touching a large grounded metal surface (such as the computer case) for several seconds. Also be careful to handle the PCI Express card by its edges and not the gold connectors.*

Hardware Installation

1. Turn your computer off and any peripherals connected to the computer (i.e. Printers, external hard drives, etc.). Unplug the power cable from the rear of the power supply on the back of the computer and disconnect all peripheral devices.
2. Remove the cover from the computer case. See documentation for your computer system for details.
3. Locate an open PCI Express slot and remove the metal cover plate on the rear of the computer case (Refer to documentation for your computer system for details.). Note that this card will work in PCI Express slots of additional lanes (i.e. x4, x8 or x16 slots).
4. Gently insert the card into the open PCI Express slot and fasten the bracket to the rear of the case.

Note: Replacing the pre-installed installation bracket may be necessary at this point depending on the card purchased (ST1000SPEX2 / ST1000SPEX2L), and the profile of the system it is being installed in.

5. Place the cover back onto the computer case. Insert the power cable into the socket on the power supply and reconnect all other connectors removed in Step 1.

Driver Installation

Notes: New versions of this product do not include the Driver CD.

Please visit www.StarTech.com/ST1000SPEX2 and navigate to the **Support** tab to locate and download the latest drivers.

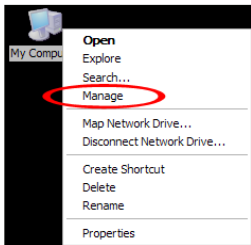
Windows

1. Upon starting Windows, if the “Found New Hardware” wizard appears on the screen, cancel/close the window and insert the included Driver CD into the computer’s CD/DVD drive.
2. AutoPlay should give you the option to browse the files on the CD or automatically open the CD. If AutoPlay does not start, Go into “My Computer” and access the CD/DVD drive that the CD is in (e.g. D:).
3. Navigate to the location “Realtek/RTL8111” and then access the folder for the appropriate operating system version.
4. Double-click the file “Setup.exe” to start the driver installation program.
5. Complete the wizard and this will automatically install all of the drivers/software. Restart the computer if prompted.

Verify Installation

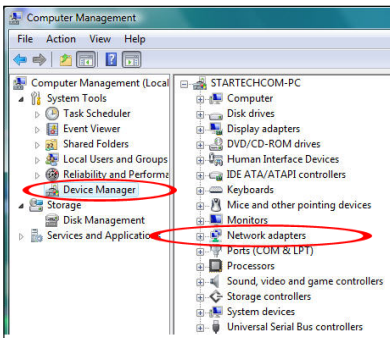
Windows

1. From the main desktop, right-click on **My Computer** (**Computer** in Vista/7/8).



Pop-up menu

2. From the pop-up menu, select **Manage**.
3. On the **Computer Management** screen, select **Device Manager** (left menu).
4. The right side of the **Computer Management** screen, will populate. Select **Network Adapters**.



Computer Management screen

5. The **Realtek PCIe GBE** devices listed will be listed if the installation was successful.

LED Indicators

| LED | Color | Status |
|---------------|--------|---|
| Link/Activity | Green | Solid On: Link/cable detected Flashing: Data transmission Off: No link/cable detected |
| Gigabit | Yellow | Solid On: 1000 Mbps (Gigabit) Link detected Off: 10/100 Mbps Link or no link detected |

Specifications

| | ST1000SPEX2 | ST1000SPEX2L |
|------------------------------|--|---|
| Host Interface | PCI Express 1.1 (x1 slot connector) | |
| Form Factor | Standard Profile (LP Bracket Included) | Low Profile (SP Bracket Included) |
| Chipset ID | Realtek RTL8111E | |
| External Connectors | 1x RJ45 Ethernet Female | |
| LEDs | 1x Gigabit 1x Link/Activity | |
| Supported Standards | IEEE 802.3, IEEE802.3u, IEEE 802.3ab | |
| Compatible Networks | 10/100/1000 Mbps | |
| Auto MDIX Support | Yes | |
| Full Duplex Support | Yes | |
| Operating Temperature | 0°C ~ 70°C (32°F ~ 158°F) | |
| Storage Temperature | 0°C ~ 100°C (32°F ~ 212°F) | |

To view manuals, videos, drivers, downloads, technical drawings, and more visit www.startech.com/support

| | | |
|-------------------------------------|--|---------------------|
| Humidity | 10% ~ 90% RH | |
| Dimensions | 67.9 x 18 x 120.3mm | 67.9 x 18 x 65mm |
| Weight | 40g | 36g |
| Compatible Operating Systems | <p>Windows® 8 (32/64bit), 7 (32/64), Vista(32/64), XP(32/64), 2000</p> <p>Windows® Server 2008 R2, 2003(32/64)</p> <p>Mac OS X (Intel based, tested up to 10.8)</p> <p>Linux</p> | |

Warranty Information

This product is backed by a two-year warranty.

For further information on product warranty terms and conditions, please refer to www.startech.com/warranty.

Limitation of Liability

In no event shall the liability of StarTech.com Ltd. and StarTech.com USA LLP (or their officers, directors, employees or agents) for any damages (whether direct or indirect, special, punitive, incidental, consequential, or otherwise), loss of profits, loss of business, or any pecuniary loss, arising out of or related to the use of the product exceed the actual price paid for the product.

Some states do not allow the exclusion or limitation of incidental or consequential damages. If such laws apply, the limitations or exclusions contained in this statement may not apply to you.

Hard-to-find made easy. At StarTech.com, that isn't a slogan. It's a promise.

StarTech.com is your one-stop source for every connectivity part you need. From the latest technology to legacy products — and all the parts that bridge the old and new — we can help you find the parts that connect your solutions.

We make it easy to locate the parts, and we quickly deliver them wherever they need to go. Just talk to one of our tech advisors or visit our website. You'll be connected to the products you need in no time.

Visit www.startech.com for complete information on all StarTech.com products and to access exclusive resources and time-saving tools.

StarTech.com is an ISO 9001 Registered manufacturer of connectivity and technology parts. StarTech.com was founded in 1985 and has operations in the United States, Canada, the United Kingdom and Taiwan servicing a worldwide market.

Reviews

Share your experiences using StarTech.com products, including product applications and setup, what you love about the products, and areas for improvement.

StarTech.com Ltd.

45 Artisans Cres.
London, Ontario
N5V 5E9
Canada

FR: fr.startech.com

DE: de.startech.com

StarTech.com LLP

2500 Creekside Pkwy.
Lockbourne, Ohio
43137
U.S.A.

ES: es.startech.com

NL: nl.startech.com

StarTech.com Ltd.

Unit B, Pinnacle
15 Gowerton Rd.,
Brackmills
Northampton
NN4 7BW
United Kingdom

IT: it.startech.com

JP: jp.startech.com