

## USB 3.0 to SATA IDE HDD Docking Station for 2.5/3.5in HDD

UNIDOCK3U / UNIDOCK3UGB / UNIDOCK3UEU



\*actual product may vary from photos

DE: Bedienungsanleitung - [de.startech.com](http://de.startech.com)

FR: Guide de l'utilisateur - [fr.startech.com](http://fr.startech.com)

ES: Guía del usuario - [es.startech.com](http://es.startech.com)

IT: Guida per l'uso - [it.startech.com](http://it.startech.com)

NL: Gebruiksaanwijzing - [nl.startech.com](http://nl.startech.com)

PT: Guia do usuário - [pt.startech.com](http://pt.startech.com)

For the most up-to-date information, please visit: [www.startech.com](http://www.startech.com)

## FCC Compliance Statement

This equipment has been tested and found to comply with the limits for a Class B digital device, pursuant to part 15 of the FCC Rules. These limits are designed to provide reasonable protection against harmful interference in a residential installation. This equipment generates, uses and can radiate radio frequency energy and, if not installed and used in accordance with the instructions, may cause harmful interference to radio communications. However, there is no guarantee that interference will not occur in a particular installation. If this equipment does cause harmful interference to radio or television reception, which can be determined by turning the equipment off and on, the user is encouraged to try to correct the interference by one or more of the following measures:

- Reorient or relocate the receiving antenna.
- Increase the separation between the equipment and receiver.
- Connect the equipment into an outlet on a circuit different from that to which the receiver is connected.
- Consult the dealer or an experienced radio/TV technician for help.

## Use of Trademarks, Registered Trademarks, and other Protected Names and Symbols

This manual may make reference to trademarks, registered trademarks, and other protected names and/or symbols of third-party companies not related in any way to StarTech.com. Where they occur these references are for illustrative purposes only and do not represent an endorsement of a product or service by StarTech.com, or an endorsement of the product(s) to which this manual applies by the third-party company in question. Regardless of any direct acknowledgement elsewhere in the body of this document, StarTech.com hereby acknowledges that all trademarks, registered trademarks, service marks, and other protected names and/or symbols contained in this manual and related documents are the property of their respective holders.

# Table of Contents

<b>Introduction</b> .....	<b>1</b>
Packaging Contents .....	1
System Requirements.....	1
Front View .....	2
Rear View .....	2
<b>Installation</b> .....	<b>3</b>
Hardware Installation .....	3
Driver Installation.....	4
<b>Using the Storage Device</b> .....	<b>5</b>
<b>Specifications</b> .....	<b>7</b>
<b>Technical Support</b> .....	<b>8</b>
<b>Warranty Information</b> .....	<b>8</b>

# Introduction

The UNIDOCK3U USB 3.0 to SATA/IDE Hard Drive Docking Station delivers instant access to 2.5" and 3.5" IDE or SATA hard drives through top slot-loading drive slots for both SATA and IDE, instead of having to mount the drives into a computer or external enclosure/tray. The slot-loading design holds the SATA and IDE drive upright inside the dock to keep them off the desk for convenience and a clutter free setup. Connected to the host computer through a single USB 3.0 connection, both an IDE hard drive and a SATA hard drive (SATA, SATA II, SATA III) can be connected to the HDD dock simultaneously - a convenient solution for migrating data from an IDE drive to a SATA drive or vice versa, or simply harnessing fast and simple access to the contents on both hard drives.

## Packaging Contents

- 1 x Universal Hard Drive Dock
- 1 x USB 3.0 Cable
- 1 x IDE 40 to 40-Pin Cable
- 1 x LP4 Power Cable
- 1 x 40-Pin + LP4 to 44-Pin IDE Cable
- 1 x Power Adapter
- 1 x Power Cord
- 1 x Instruction Manual

## System Requirements

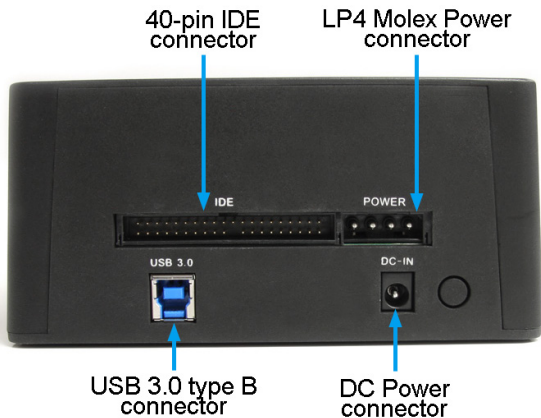
- USB enabled computer system with available USB 3.0 port
- Available AC electrical outlet
- Microsoft® Windows® 2000/XP/Server 2003/Vista/Server 2008 R2/7 (32/64-bit), or Apple® Mac OS® X\*, or Linux®

\*If used with the Apple Mac OS operating system, this device will function in USB 2.0 mode only as Apple does not yet support USB 3.0

## Front View



## Rear View



# Installation

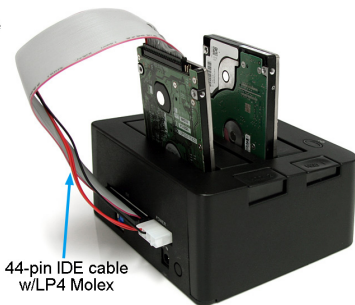
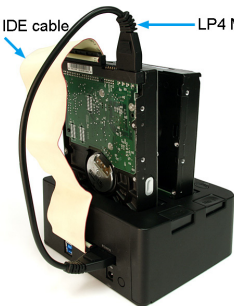


**WARNING!** Hard drives and storage enclosures require careful handling, especially when being transported. If you are not careful with your hard disk, lost data may result. Always handle your hard drive and storage device with caution. Be sure that you are properly grounded by wearing an anti-static strap when handling computer components or discharge yourself of any static electricity build-up by touching a large grounded metal surface (such as the computer case) for several seconds.

## Hardware Installation

1. Connect the external power adapter from the hard drive dock to a power outlet.
2. Insert a 2.5" or 3.5" SATA hard drive into the top-loading drive bay closest to the front of the dock. Make sure that the SATA connectors on the hard drive are facing the same corner of the drive bay that has the 2.5in cutout in the door. The label on the hard drive should face the front of the hard drive dock.
3. If using a 3.5in IDE hard drive, connect the included 40-pin IDE ribbon cable to the IDE connector on the rear of the dock. If using a 2.5in IDE hard drive, connect the 40 to 44-pin IDE cable to the rear of the dock.
4. Connect the included LP4 Molex power cable into the LP4 connector on the rear of the dock. If using the 40 to 44-pin cable, connect the built-in LP4 connector to the connector on the rear of the dock.
5. Connect the IDE hard drive to the ribbon cable and LP4 Molex connector (3.5in only). Make sure all of the cables are securely connected.
6. Insert the IDE hard drive into the top-loading drive bay (closest to rear connectors).

40-pin IDE cable ← LP4 Molex cable



44-pin IDE cable  
w/LP4 Molex

7. Connect the included USB cable from the hard drive dock to an available USB port on the computer system. The computer can be on or off.

**NOTE:** The USB 3.0 cable can be connected to a USB 2.0 port, however will only be able to operate at USB 2.0 speeds.

8. Press the power button on the front of the dock. Button 1 is for the SATA drive, and button 2 is for the IDE drive.
9. The SATA drive bay has an ejection button next to it, that can be pressed to help pull the drive free from the bay. **NOTE:** Drives should be powered off before being removed from the dock.

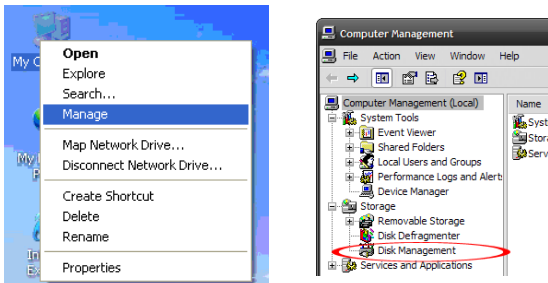
## Driver Installation

No driver installation is required for the supported operating systems, as this hard drive dock is natively supported, so the drivers are already installed.

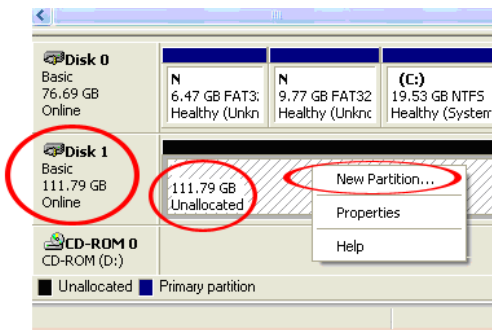
# Using the Storage Device

## Windows 2000/XP/Vista/7

If you are using a brand new hard drive that does not contain any data, then you will first need to prepare the hard drive for use. From the main desktop, right-click on "My Computer" ("Computer" in Vista/7), then select Manage. In the new Computer Management window, select Disk Management from the left window panel.

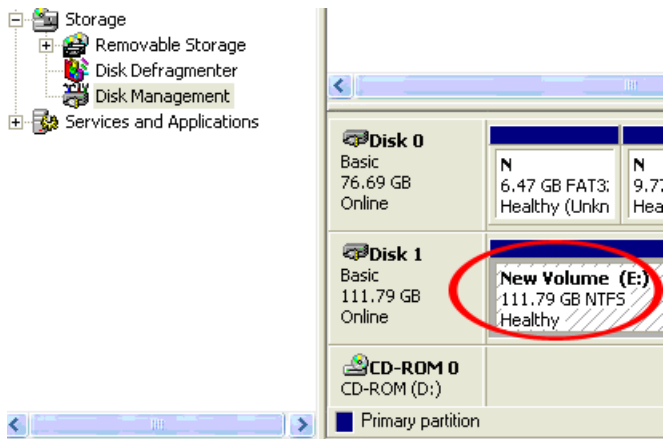


Locate the Disk that says it is "Unallocated" (check hard drive capacity to confirm it's the correct hard drive) and then right-click in the section that says "Unallocated" and select "New Partition".





The New Partition Wizard will appear. Follow the instructions in the wizard to complete setting up the drive. Once complete, the Disk should show up as “Healthy” with a drive letter assigned (i.e. E:). This drive letter should now appear within My Computer.



If you are installing a hard drive that already has data on it, then after plugging it in, the drive should automatically show up with a drive letter assigned within My Computer.

# Specifications

<b>Drive Bays</b>	2
<b>Host Interface</b>	SuperSpeed USB 3.0
<b>Chipset ID</b>	JMicron JMS551
<b>External Connectors</b>	1 x USB 3.0 type B female 1 x 40-pin IDE male 1 x LP4 Molex male 1 x DC Power
<b>LEDs</b>	2 x Power/Activity
<b>Maximum Data Transfer Rate</b>	USB 3.0: 5 Gbps
<b>Compatible Hard Drives</b>	2.5/3.5in SATA 40-pin and 44-pin 2.5/3.5in IDE
<b>Power Supply</b>	12V DC, 3000 mA, center positive, type M plug
<b>Operating Temperature</b>	5°C ~ 80° (41°F ~ 176°F)
<b>Storage Temperature</b>	-40°C ~ 70°C (-40°F ~ 158°F)
<b>Humidity</b>	8% ~ 90% RH
<b>Dimension (LxWxH)</b>	140.0mm x 130.0mm x 70.0mm
<b>Weight</b>	610g
<b>Compatible Operating Systems</b>	Windows 2000/XP/Server 2003/Vista/ Server 2008 R2/7 (32/64-bit), Mac OS X, Linux

# Technical Support

StarTech.com's lifetime technical support is an integral part of our commitment to provide industry-leading solutions. If you ever need help with your product, visit [www.startech.com/support](http://www.startech.com/support) and access our comprehensive selection of online tools, documentation, and downloads.

For the latest drivers/software, please visit [www.startech.com/downloads](http://www.startech.com/downloads)

## Warranty Information

This product is backed by a two year warranty.

In addition, StarTech.com warrants its products against defects in materials and workmanship for the periods noted, following the initial date of purchase. During this period, the products may be returned for repair, or replacement with equivalent products at our discretion. The warranty covers parts and labor costs only. StarTech.com does not warrant its products from defects or damages arising from misuse, abuse, alteration, or normal wear and tear.

### Limitation of Liability

In no event shall the liability of StarTech.com Ltd. and StarTech.com USA LLP (or their officers, directors, employees or agents) for any damages (whether direct or indirect, special, punitive, incidental, consequential, or otherwise), loss of profits, loss of business, or any pecuniary loss, arising out of or related to the use of the product exceed the actual price paid for the product. Some states do not allow the exclusion or limitation of incidental or consequential damages. If such laws apply, the limitations or exclusions contained in this statement may not apply to you.

Hard-to-find made easy. At StarTech.com, that isn't a slogan. It's a promise.

StarTech.com is your one-stop source for every connectivity part you need. From the latest technology to legacy products — and all the parts that bridge the old and new — we can help you find the parts that connect your solutions.

We make it easy to locate the parts, and we quickly deliver them wherever they need to go. Just talk to one of our tech advisors or visit our website. You'll be connected to the products you need in no time.

Visit [www.startech.com](http://www.startech.com) for complete information on all StarTech.com products and to access exclusive resources and time-saving tools.

*StarTech.com is an ISO 9001 Registered manufacturer of connectivity and technology parts. StarTech.com was founded in 1985 and has operations in the United States, Canada, the United Kingdom and Taiwan servicing a worldwide market.*