

USB 3.0 SATA III (6 Gbps) Adapter Cable for 2.5in or 3.5in Hard Drives

USB3S2SATA3



*actual product may vary from photos

DE: Bedienungsanleitung - de.startech.com

FR: Guide de l'utilisateur - fr.startech.com

ES: Guía del usuario - es.startech.com

IT: Guida per l'uso - it.startech.com

NL: Gebruiksaanwijzing - nl.startech.com

PT: Guia do usuário - pt.startech.com

For the most up-to-date information, please visit: www.startech.com

FCC Compliance Statement

This equipment has been tested and found to comply with the limits for a Class B digital device, pursuant to part 15 of the FCC Rules. These limits are designed to provide reasonable protection against harmful interference in a residential installation. This equipment generates, uses and can radiate radio frequency energy and, if not installed and used in accordance with the instructions, may cause harmful interference to radio communications. However, there is no guarantee that interference will not occur in a particular installation. If this equipment does cause harmful interference to radio or television reception, which can be determined by turning the equipment off and on, the user is encouraged to try to correct the interference by one or more of the following measures:

- Reorient or relocate the receiving antenna.
- Increase the separation between the equipment and receiver.
- Connect the equipment into an outlet on a circuit different from that to which the receiver is connected.
- Consult the dealer or an experienced radio/TV technician for help.

Use of Trademarks, Registered Trademarks, and other Protected Names and Symbols

This manual may make reference to trademarks, registered trademarks, and other protected names and/or symbols of third-party companies not related in any way to StarTech.com. Where they occur these references are for illustrative purposes only and do not represent an endorsement of a product or service by StarTech.com, or an endorsement of the product(s) to which this manual applies by the third-party company in question. Regardless of any direct acknowledgement elsewhere in the body of this document, StarTech.com hereby acknowledges that all trademarks, registered trademarks, service marks, and other protected names and/or symbols contained in this manual and related documents are the property of their respective holders.

Table of Contents

Introduction	1
Packaging Contents	1
System Requirements.....	1
Installation	3
Hardware Installation	3
Driver Installation.....	3
Verifying Installation	4
Windows.....	4
Software Installation.....	4
How to Use	5
Software	6
Specifications	7
Technical Support	8
Warranty Information	8

Introduction

The USB3S2SATA3 USB 3.0 to SATA Adapter connects any standard 2.5in or 3.5in SATA (6Gbps) hard drive (HDD), solid state drive (SSD), or optical drive to a computer through SuperSpeed USB 3.0.

The USB 3.0 to SATA III adapter lets you externally connect a bare drive with no drive enclosure or HDD dock required, saving time, hassle and added cost.

The adapter cable works with Windows®, Linux, and Mac® computers and does not require any software or driver installation - a true plug-and-play solution for adding cost-effective external storage, or overcoming incompatibility between modern hard drives and motherboards that may not be SATA-equipped or have a Serial ATA port available.

For even more versatility, our USB 3.0 to SATA 3 adapter is equipped with a built-in Backup button that, when combined with the easy-to-use included software, will launch the backup utility with the touch of a button.

The USB3S2SATA3 USB 3.0 to SATA Converter is backed by a StarTech.com 2-year warranty and free lifetime technical support.

Packaging Contents

- USB 3.0 to SATA Converter
- 1x USB 3.0 A to B cable
- 1x Universal Power Adapter
- 3x Power Adapter Plug (NA/ UK/ EU)
- 1x Software CD
- 1x Instruction Manual

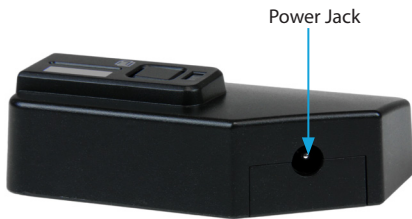
System Requirements

- Host computer system with an available USB 2.0/3.0 port
- Microsoft® Windows® XP (32/64-bit)/Server 2003 (32/64-bit)/Vista (32/64-bit)/Server 2008 R2/7 (32/64-bit)/8 (32/64-bit), or Mac OS X® 10.x, or Linux

Front View



Rear View



Installation

WARNING: Hard drives require careful handling, especially when being transported. If you are not careful with your hard disk, lost data may result. Always handle your hard drive and storage device with caution.

Hardware Installation

1. Connect a 2.5" or 3.5" SATA HDD/SSD or Optical drive to the 22-pin SATA connector on the adapter.
2. Connect the external power adapter to the DC power connector on the adapter. Connect the power adapter to an electrical outlet. The drive will spin up once power is connected.

NOTE: Most 2.5in drives will function without the power adapter as power is provided through USB.

3. Connect the USB 3.0 A-B cable from the adapter to an available USB port on the host computer system. This USB 3.0 adapter is compatible with USB 2.0, so will also connect to a USB 2.0 port, however at the lower speed. The host computer system will detect the adapter and automatically install the driver.

NOTE: While power will be provided to the drive once the power adapter is connected, the power LED will not light up until connected to a host computer system via USB.

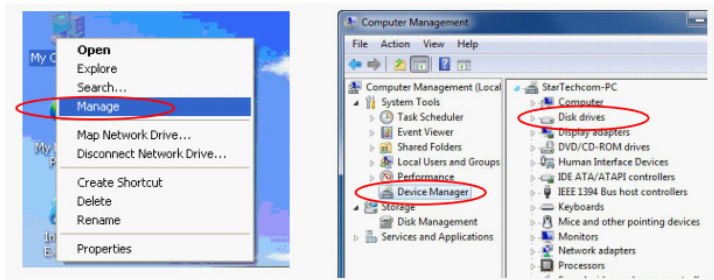
Driver Installation

No driver installation is required for the supported operating systems as this adapter is natively supported, so the drivers are already installed.

Verifying Installation

Windows

From the main desktop, right-click on “My Computer” (“Computer” in Vista/7/8), then select Manage. In the new Computer Management window, select Device Manager from the left window panel.



Double-click on the “Disk Drives” option. A new disk drive should be listed under this category. It will typically contain the make/model of the hard drive you have connected to the adapter.

Software Installation

1. Insert the included “PC Clone EX Lite” Utility CD into a CD/DVD-ROM.
2. AutoPlay should give you the option to browse the files on the CD or automatically open the CD.
3. If AutoPlay does not start, go into “My Computer” and access the CD/DVD drive that the CD is in and run the installation file.
4. Follow the on-screen installation to complete the installation.
5. A “PC Clone EX” icon will be listed in the system tray and on the desktop.

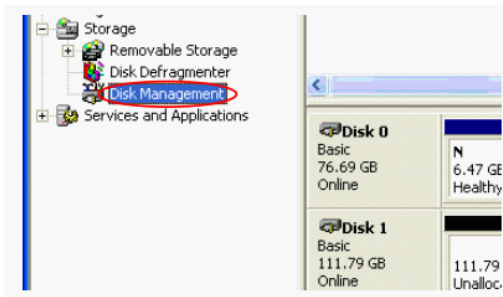


6. For more information about how to use the software, right-click on the icon in the system tray and select “Help”.

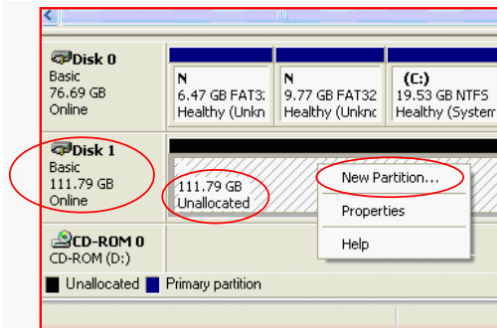
How to Use

Windows

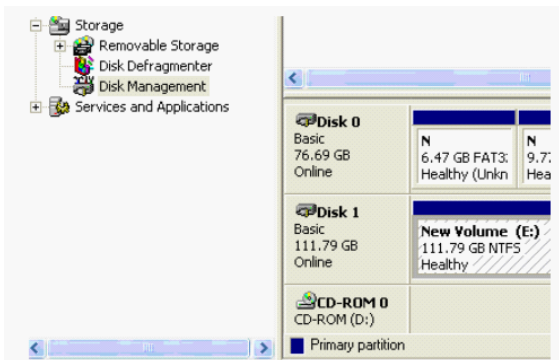
If you are using a brand new hard drive that does not contain any data, then you will first need to prepare the hard drive for use. From the main desktop, right-click on "My Computer" ("Computer" in Vista/7/8), then select Manage. In the new Computer Management window, select Disk Management from the left window panel.



Locate the Disk that says it is "Unallocated" (check hard drive capacity to confirm it's the correct hard drive) and then right-click in the section that says "Unallocated" and select "New Partition".



The New Partition Wizard will appear. Follow the instructions in the wizard to complete setting up the drive. Once complete, the Disk should show up as "Healthy" with a drive letter assigned (i.e. E:). This drive letter should now appear within My Computer.



If you are installing a hard drive that already has data on it, then after plugging it in, the drive should automatically show up with a drive letter assigned within “My Computer”.

Software

To run the software, press the “Backup” button on the adapter or double-click the PC Clone icon on your desktop.

Specifications

Bus Interface	SuperSpeed USB 3.0
Chipset ID	ASMedia ASM1051E
Connectors	1x 22-Pin SATA Receptacle 1x USB 3.0 Type B Female
LEDs	1x Amber Power/Activity LED
Maximum Data Transfer Rate	USB 3.0: 5Gbps
Compatible Drives	2.5"/3.5" SATA HDD/SSD/Optical
Color	Black
Power Adapter	12VDC, 1.5A, center positive, plug type M
Operating Temperature	0°C ~ 50°C (32°F ~ 122°F)
Storage Temperature	20°C ~ 60°C (68°F ~ 140°F)
Humidity	5% ~ 85% RH
Dimensions (LxWxH)	69.4mm x 47.3mm x 21.6mm
Weight	32.7g
Compatible Operating Systems	Windows XP(32/64bit)/ Server 2003(32/64bit)/ Vista(32/64bit)/ Server 2008 R2/ 7(32/64bit)/ 8(32-64-bit), Mac OSX 10.x, Linux

Technical Support

StarTech.com's lifetime technical support is an integral part of our commitment to provide industry-leading solutions. If you ever need help with your product, visit www.startech.com/support and access our comprehensive selection of online tools, documentation, and downloads.

For the latest drivers/software, please visit www.startech.com/downloads

Warranty Information

This product is backed by a two year warranty.

In addition, StarTech.com warrants its products against defects in materials and workmanship for the periods noted, following the initial date of purchase. During this period, the products may be returned for repair, or replacement with equivalent products at our discretion. The warranty covers parts and labor costs only. StarTech.com does not warrant its products from defects or damages arising from misuse, abuse, alteration, or normal wear and tear.

Limitation of Liability

In no event shall the liability of StarTech.com Ltd. and StarTech.com USA LLP (or their officers, directors, employees or agents) for any damages (whether direct or indirect, special, punitive, incidental, consequential, or otherwise), loss of profits, loss of business, or any pecuniary loss, arising out of or related to the use of the product exceed the actual price paid for the product. Some states do not allow the exclusion or limitation of incidental or consequential damages. If such laws apply, the limitations or exclusions contained in this statement may not apply to you.

Hard-to-find made easy. At StarTech.com, that isn't a slogan. It's a promise.

StarTech.com is your one-stop source for every connectivity part you need. From the latest technology to legacy products — and all the parts that bridge the old and new — we can help you find the parts that connect your solutions.

We make it easy to locate the parts, and we quickly deliver them wherever they need to go. Just talk to one of our tech advisors or visit our website. You'll be connected to the products you need in no time.

Visit www.startech.com for complete information on all StarTech.com products and to access exclusive resources and time-saving tools.

StarTech.com is an ISO 9001 Registered manufacturer of connectivity and technology parts. StarTech.com was founded in 1985 and has operations in the United States, Canada, the United Kingdom and Taiwan servicing a worldwide market.